



8195 Bramble Creek Court
Mansfield, TX 76063
Office: 817.477.1991
www.mizzenmarketing.com

Valhalla Center

CONFERENCING SYSTEM

DOUG HALL

OCTOBER 1, 2023

Scope of Work

- ❑ 56' x 40' room that can be divided into two halves via partition.
- ❑ 15' high ceiling with 12' of usable space below structure.
- ❑ Beyond any DSP connectivity, additional jacks, connectors, cabling, install hardware, etc. will be the responsibility of the dealer.

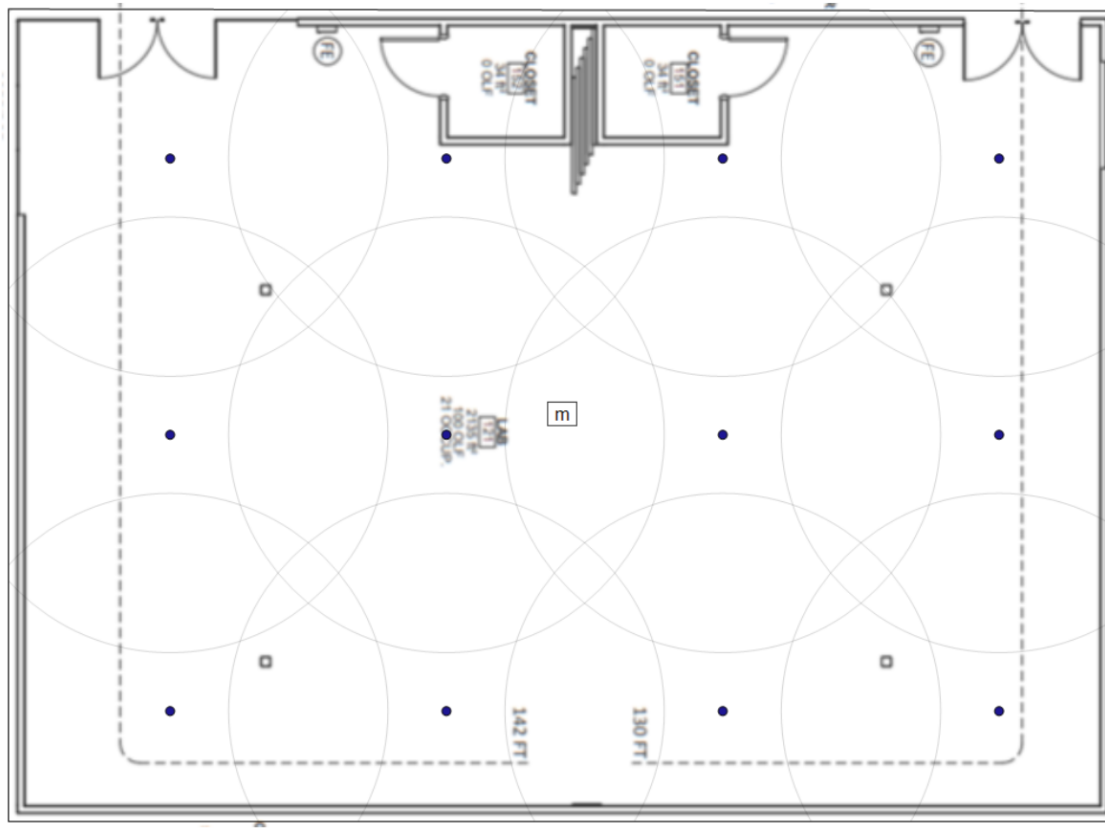


PARTS NEEDED FOR THIS QUOTE/INSTALLATION:



- Pendant speakers have been discussed. These speakers need to set up in four zones with individual volume control for each of the four zones (two zones in each half).
- 8 wireless table mics, wireless hand held and lavalier.
- DSP to manage the audio sources, feed the two zones and one or two other recording or streaming devices.
- Projectors (qty. 2) that require 4500 lumens. They will have the ability to dim the row of lights nearest the screens.
- Customer will provide for basic video switching, streaming, and recording. We need to be able to feed it via 1/8" analog audio (program feed).
- They want two cameras and camera controller for streaming. PTZ cameras which provide performance and price.

Speaker Placement



Sound Sources

Nr.	Mounting	Type	X [ft]	Y [ft]	Z [ft]	Hor [°]	Ver [°]	Tap Settings
1	Ceiling	PM4FA	7.95	32.64	10.00	0.0	-90.0	16W (70V)
2	Ceiling	PM4FA	21.55	32.64	10.00	0.0	-90.0	16W (70V)
3	Ceiling	PM4FA	35.15	32.64	10.00	0.0	-90.0	16W (70V)
4	Ceiling	PM4FA	48.75	32.64	10.00	0.0	-90.0	16W (70V)
5	Ceiling	PM4FA	7.95	19.04	10.00	0.0	-90.0	16W (70V)
6	Ceiling	PM4FA	21.55	19.04	10.00	0.0	-90.0	16W (70V)
7	Ceiling	PM4FA	35.15	19.04	10.00	0.0	-90.0	16W (70V)
8	Ceiling	PM4FA	48.75	19.04	10.00	0.0	-90.0	16W (70V)
9	Ceiling	PM4FA	7.95	5.44	10.00	0.0	-90.0	16W (70V)
10	Ceiling	PM4FA	21.55	5.44	10.00	0.0	-90.0	16W (70V)
11	Ceiling	PM4FA	35.15	5.44	10.00	0.0	-90.0	16W (70V)
12	Ceiling	PM4FA	48.75	5.44	10.00	0.0	-90.0	16W (70V)

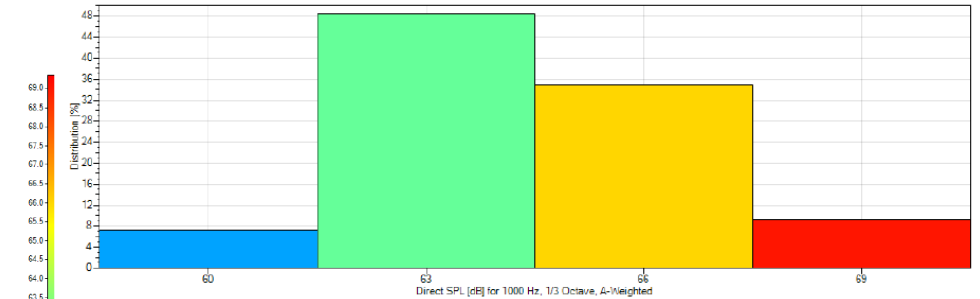
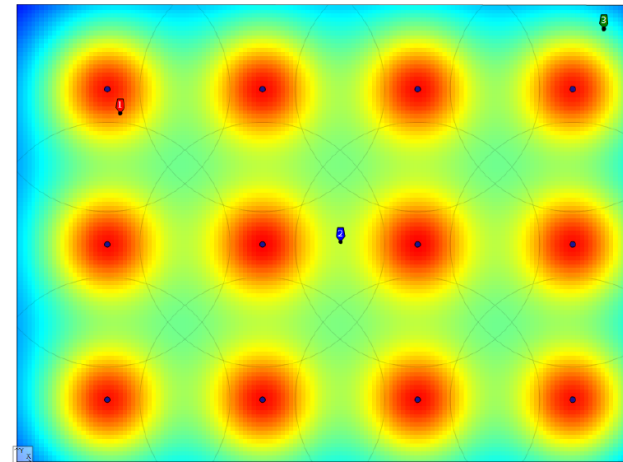
Estimated System Performance

Reverberation Time

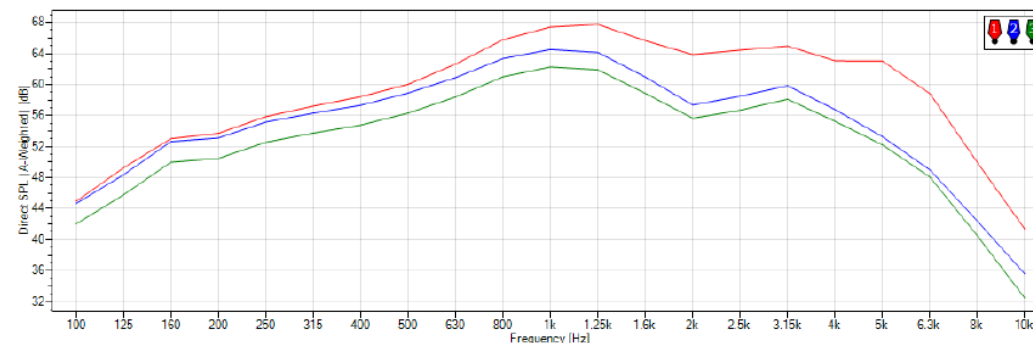
Frequency Band [Hz]	Reverberation Time (Eyring)
100	0.73 s
125	0.72 s
160	0.61 s
200	0.53 s
250	0.46 s
315	0.34 s
400	0.26 s
500	0.21 s
630	0.19 s
800	0.18 s
1000	0.17 s
1250	0.18 s
1600	0.18 s
2000	0.19 s
2500	0.20 s
3150	0.20 s
4000	0.21 s
5000	0.20 s
6300	0.19 s
8000	0.19 s
10000	0.17 s

Mapping and Distribution

Direct SPL (A-Weighted), 1000 Hz (1/3rd Octave)



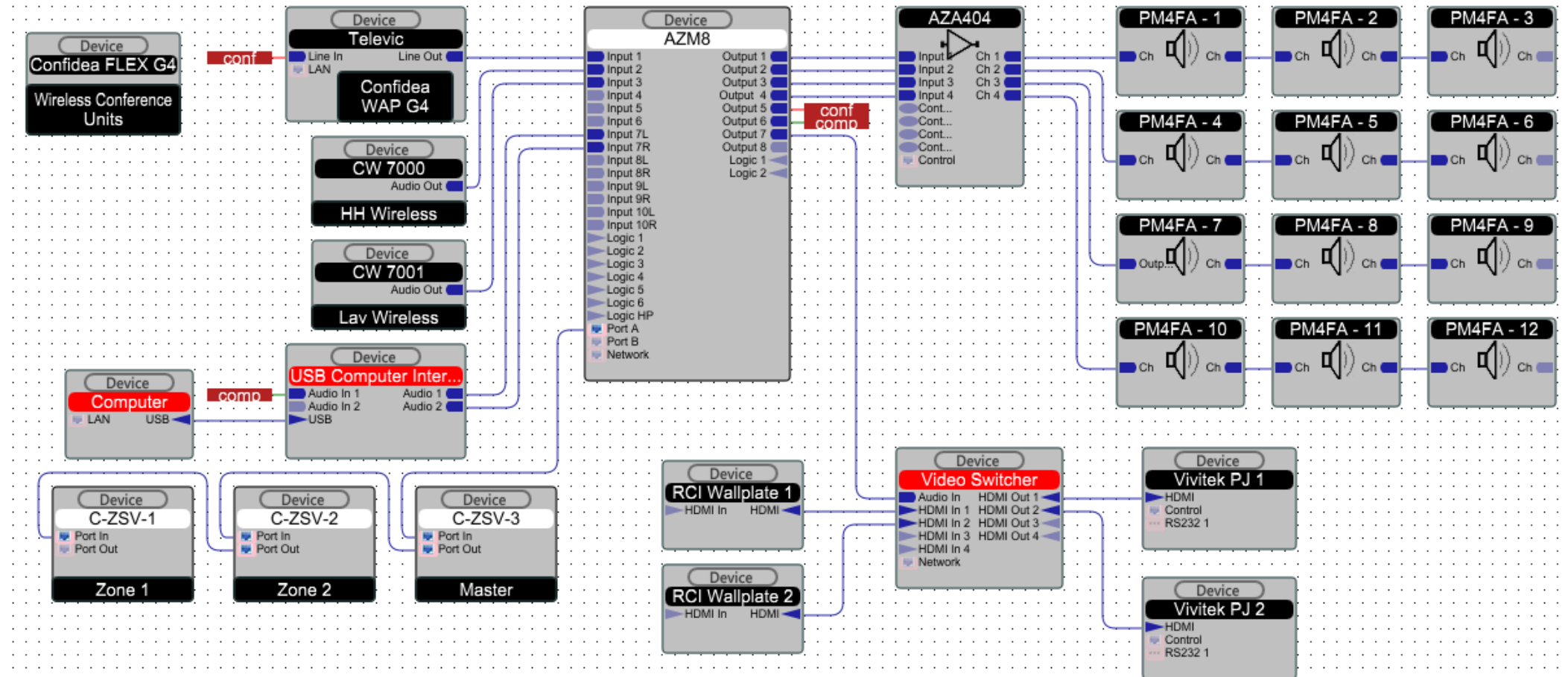
Average:	64.5 dB ±2.0 dB
Average + Std. Dev.:	66.5 dB
Average - Std. Dev.:	62.5 dB
Max. Value:	69.3 dB
Min. Value:	57.5 dB
Data Points:	16805



Area Covered:	Direct SPL(A)	Average
95%	≥61.1 dB	64.7 dB
90%	≥61.9 dB	64.9 dB
85%	≥62.6 dB	65.1 dB
80%	≥63.2 dB	65.2 dB

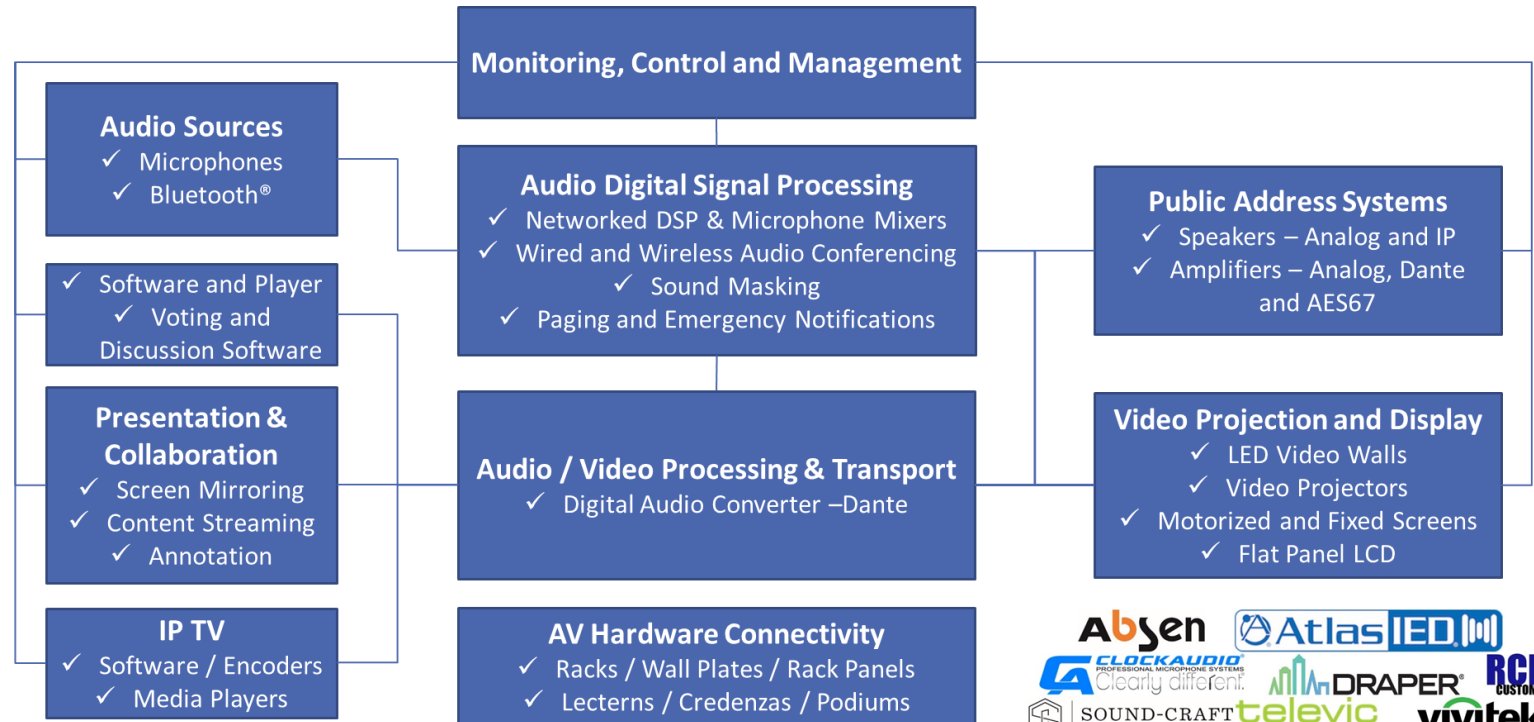
Frequency response is based on three data collection points using a real time analyzer.

AV Riser Diagram



Thank You!

The Specification contained herein is designed to be an aid to the system designer. It is intended to be used as a tool for establishing the parameters of a system design. Every effort has been made to ensure the accuracy and reliability of the specification, drawings, bills of material, equipment counts and one line drawings. Mizzen Marketing assumes no liability for any damages caused by inaccuracies in the calculations, predictions, data or documentation, or as a result of the failure of the products described in the documentation to function in a particular manner. Mizzen Marketing makes no warranty, expressed or implied, nor does the fact of the distribution of the specification documents constitute a warranty. It is the responsibility of the Engineer or Consultant to make the final judgment as to the validity and application of the specifications.



2000 Woodland Blvd
Flower Mound, TX 75022
Office: 817.368.8851
www.mizzenmarketing.com